

海洋公園 後勤工作探究



合照



行程

- 簡介會
- 臨床實驗室 (Clinical Laboratory)
 - 血液及生化學化驗室 (Haematology & Biochemistry Lab)
 - 微生物化驗室 (Microbiological Lab)
- 獸醫中心 (Veterinary Centre)
 - 復康病房



簡介會

○ 海洋公園願景

- 成為世界級具領導地位的企業
- 帶來一個既開心又難忘的**體驗**
- 與**大自然**緊密連繫起來





血液及生化學化驗室

○ 檢驗 (觀測動物健康狀況)

- 血液
- 排卵期 (交配)
- 寄生蟲

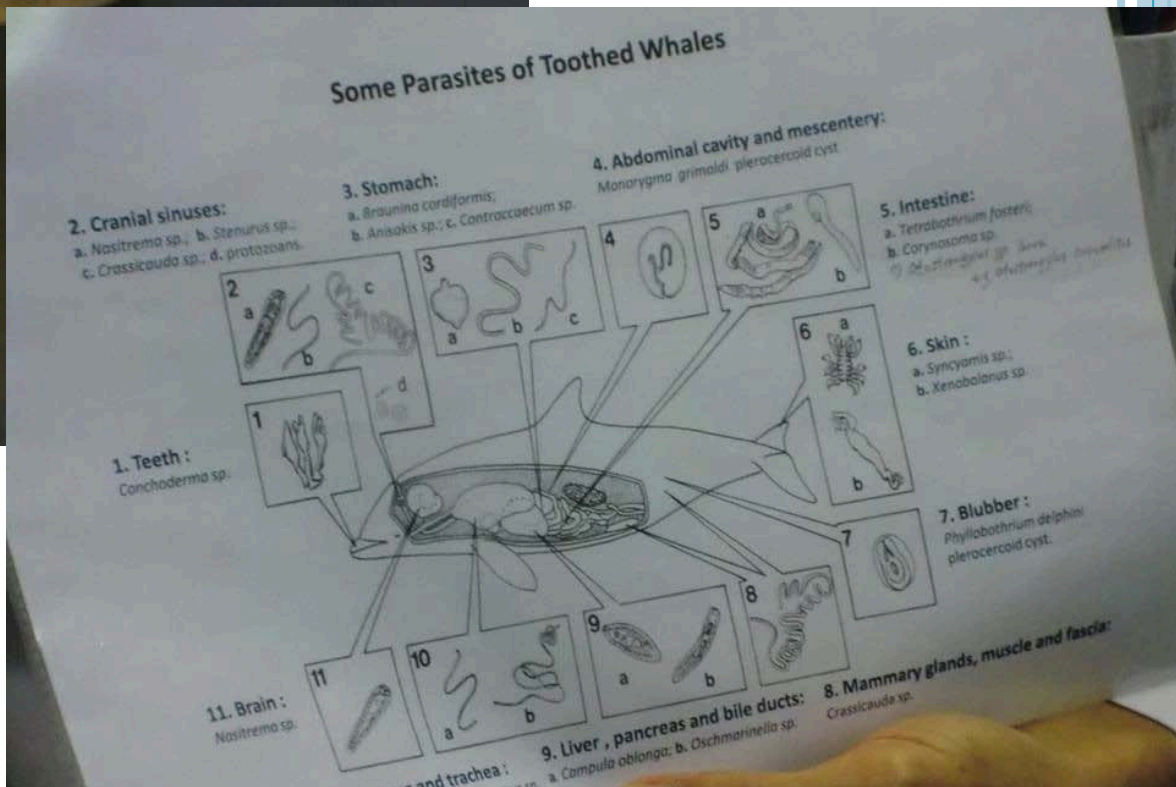
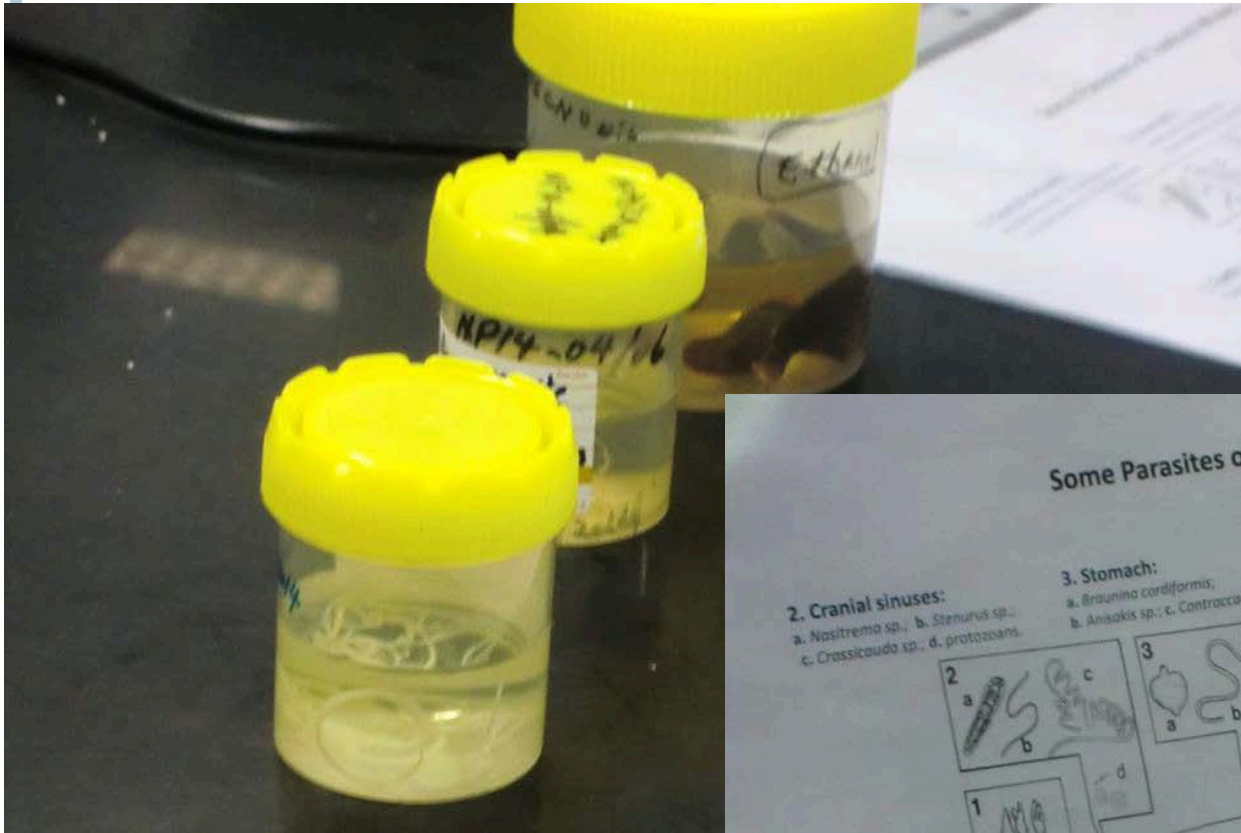


○ 精子儲存 (人工繁殖)

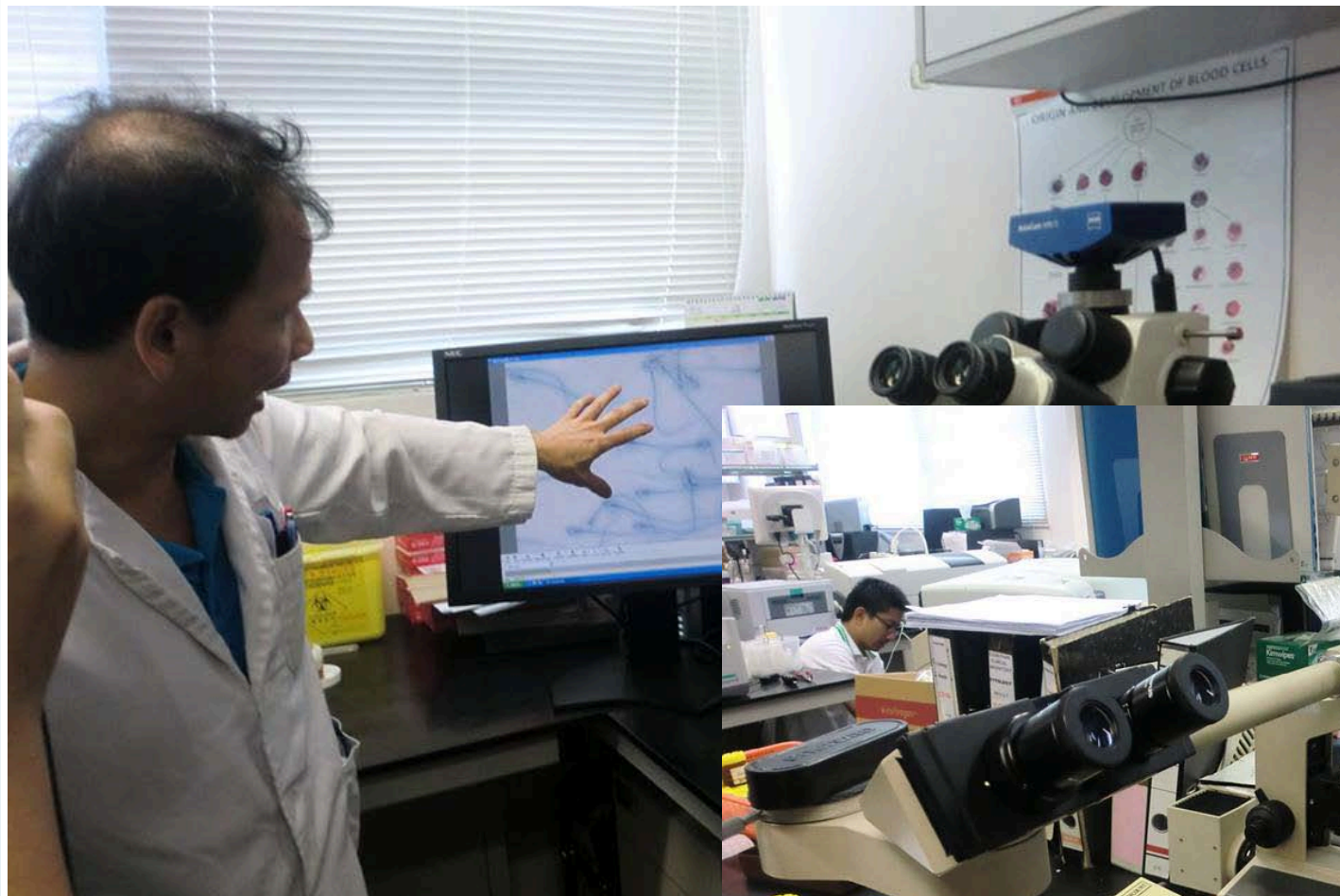
○ 工作上困難



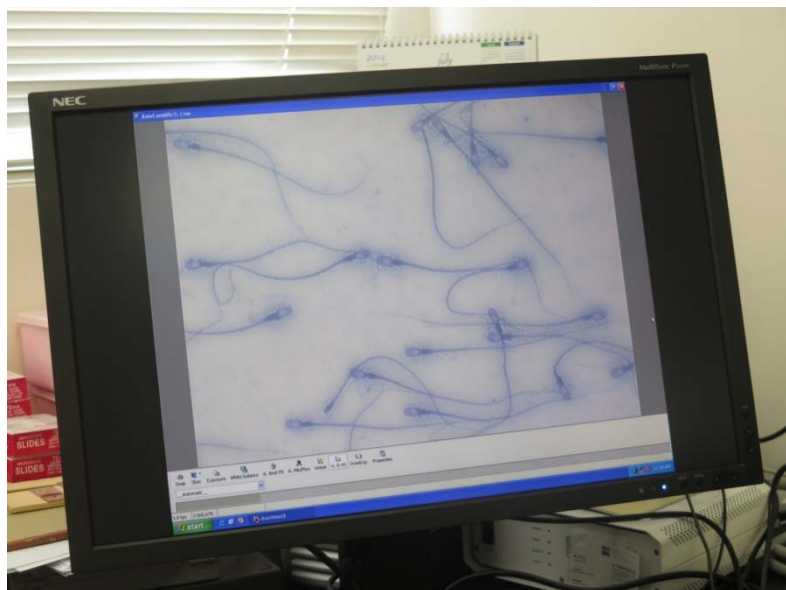
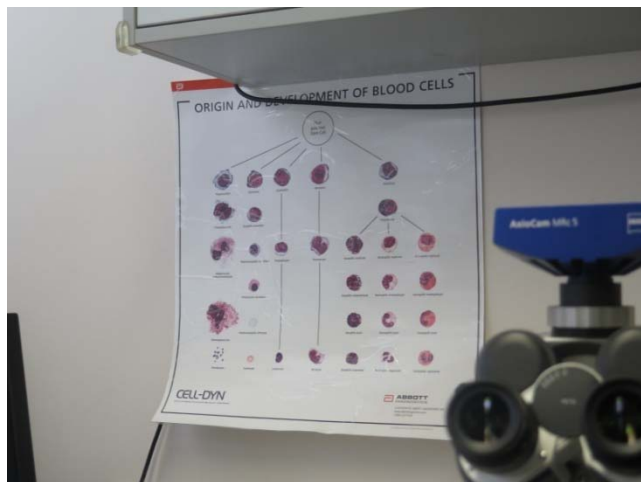
血液及生化化學實驗室



血液及生化化學實驗室



血液及生化化學實驗室



微生物化驗室

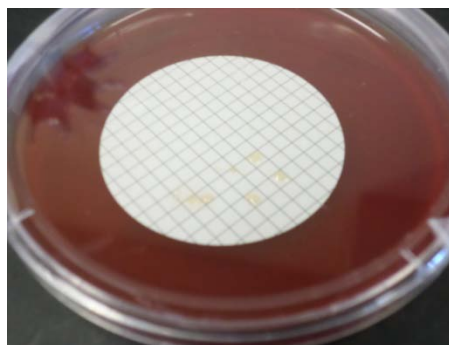
○ 檢驗3N

○ $\text{NH}_4\text{-N}$ (氨氮)
<0.1


○ Nitrite (亞硝酸鹽)
<0.03

○ Nitrate (硝酸鹽)
<15

○ 工作上困難




微生物化驗室



Point we concern
n a daily basis

Parameter	Dolphin	Sealions
pH	7.5-8.0	7.5-8.0
Temperature(°C)	21-23	23-25
Turbidity (NTU)	<0.25	<0.25
Salinity (ppt)	27-35	27-35
NH ₄ + NH ₃ (ppm)	<0.1	<0.1
Nitrate (ppm)	<15	<15
Bromine (ppm)	<1.0	1.0-2.0
Free chlorine (ppm)	*	*
ORP (mV)	550-750	550-750
Total Coliform (CFU/100ml)	<10	<10
E. coli (CFU/100ml)	0	0

3. Water Treatment and Disinfection
There are 4 main components in water that should be



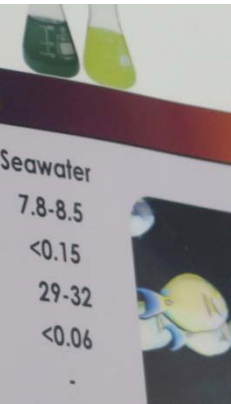
king water,
m, marine

Disinfection


meet

2. Water Quality Standard

Parameters	Freshwater	Seawater
pH	6.5-7.5	7.8-8.5
Turbidity (NTU)	<0.15	<0.15
Salinity (ppt)	0	29-32
NH ₄ -N (ppm)	<0.1	<0.06
Nitrite (ppm)	<0.03	-
Nitrate (ppm)	<15	<10
Dissolved O ₂ (ppm)	6.5-8.4	6.2-6.8
ORP (mV)	----	250-450



Parameter	Dolphin	Sealions
pH	7.5-8.0	7.5-8.0
Temperature(°C)		

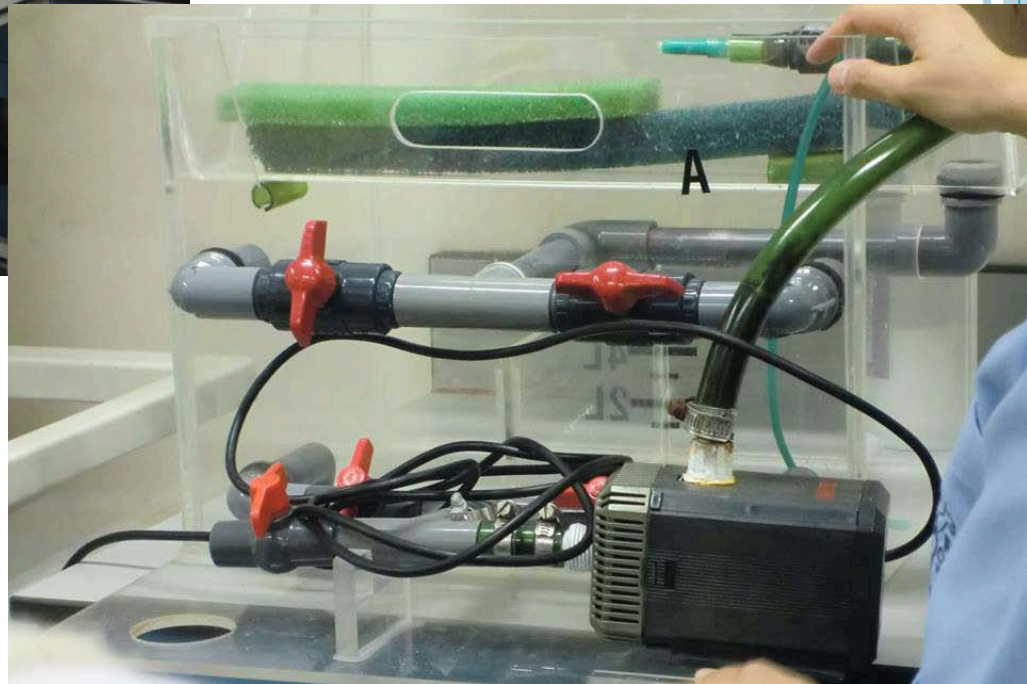



獸醫中心

- 與臨床實驗部門合作
- 處理不同動物病情
- 手術設施
 - 特殊情況
- 復康設備



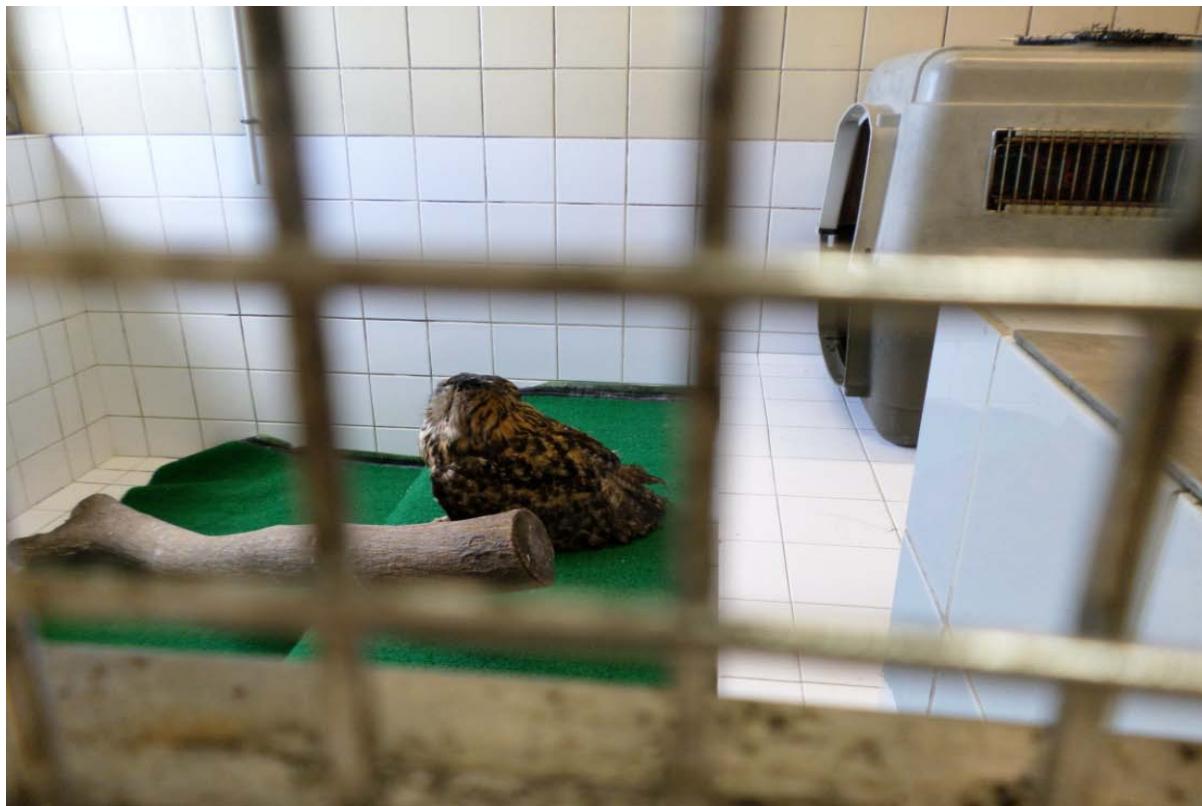
獸醫中心



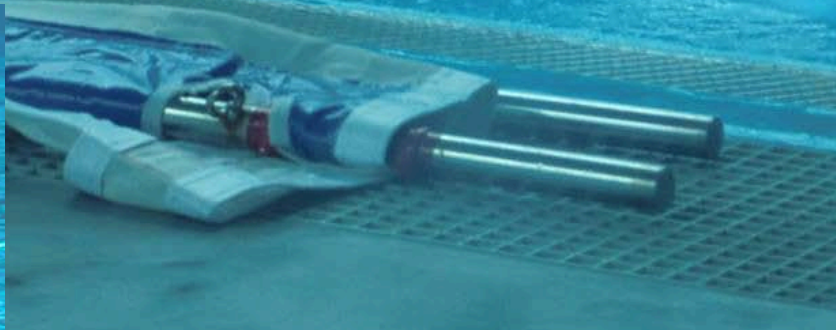
獸醫中心



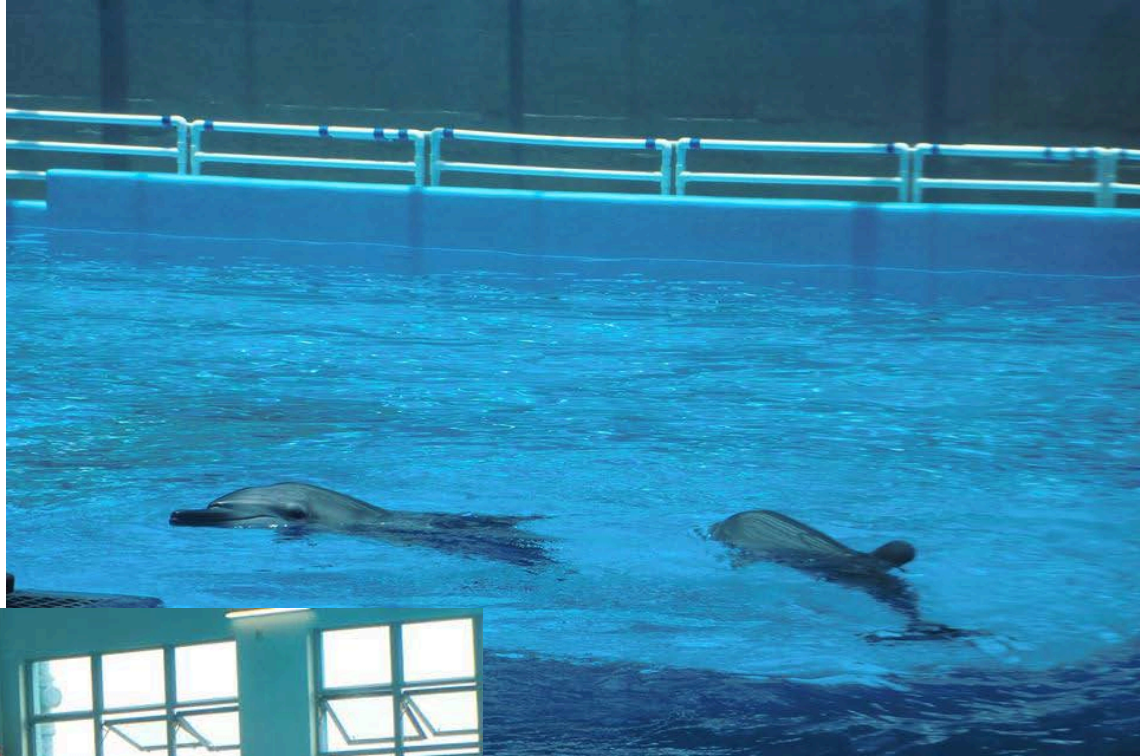
獸醫中心



觀察海豚



觀察海豚



所學及得著

◎深入了解在海洋公園內各種職業的困難以及對應的解決方法

例如：扮演吉祥物、訓練海豚

◎方便尋找一個適合自己並且感興趣的職業，例如：成為獸醫的途徑



鳴謝

- 學校
- 升就組 (程德智老師)
- 生物科 (蔡開華老師)
- 海洋公園



~ 完 ~

